

Analysis of panoramic propagation patterns mapped from patients with persistent atrial fibrillation

Nolwenn Tan^{1,2}, Elizabeth Cheng¹, Martyn P. Nash¹, Martin K. Stiles³, Stephan Willems⁴, Pawel Kuklik⁴, Jichao Zhao¹

¹Auckland Bioengineering Institute, University of Auckland, Auckland, New Zealand;

²IHU-LIRYC, Université de Bordeaux, Bordeaux, France;

³Waikato Hospital, Hamilton, New Zealand;

⁴Department of Cardiology, Electrophysiology, University Medical Center Hamburg-Eppendorf, Hamburg, Germany

Abstract

The purpose of this study is to analyze the electrical propagation patterns from patients with persistent atrial fibrillation (AF). Unipolar electrograms (~1 minute) were recorded sequentially in atrial chambers from 5 patients with persistent AF prior to ablation using a 64-electrode basket catheter. Raw unipolar signals were processed using a suite of signal processing approaches including: 1) A Savitzky-Golay filter based on a polynomial regression, 2) a standard QRS subtraction and 3) a local variability approach which uses the local integral of a fixed sized sliding window to enhance the signals. Recurring patterns of electrode activation and AF drivers were then identified by using activation time maps and dominant frequency analysis, and by screening through the entire isopotential movies of each basket recording. Localized sources in the form of either localized reentries (N=1) or focal impulses (N=4) were observed in all of the patients studied. Interestingly, all localized sources were found in the left atrium (LA) near the pulmonary veins with the exception of 1 patient where an additional focal impulse was also detected in the right atrium (RA). Disorganized activity was observed in the RA of 3 patients, though their respective LAs were driven either by reentries or focal impulses. These results suggest that localized sources may be the predominant mechanism underlying the maintenance of persistent AF.

1. Introduction

Atrial fibrillation is the most prevalent type of cardiac arrhythmia. Several treatments have been developed to treat this arrhythmia over the years. For example, pulmonary vein (PV) isolation through ablation is well known to treat paroxysmal AF [1]. However, currently there is no effective treatment for persistent AF, the more refractory forms of AF. The debate whether AF is sustained

by multiwavelets self-replicating across the atria chambers or maintained by localized sources is still ongoing [2, 3].

The multiwavelet hypothesis implies that AF is driven by multiple random irregular waves [2]. Conversely, the localized sources hypothesis suggests that electrical activity in AF is sustained by dominant regions of organized activity in the form of reentries or focal impulses [4-6].

In order to provide critical insights with respect to the mechanisms underlying AF, this study aims to analyze patient specific AF activities independently. Ideally, an improved understanding of the underlying mechanisms of AF will lead to the development of more precise and targeted treatment strategies for patients with AF.

2. Materials and method

2.1. Materials

A 64-electrode basket catheter was introduced sequentially in both atrial chambers (except patient #5) for simultaneous multi-site recording of the atrial activity (Figure 1). One-minute raw unipolar electrograms were recorded at a 2 kHz sampling frequency. Electro-anatomical data including atrial chamber geometry and relative electrode positional data were also simultaneously collected using the EnSite Velocity cardiac mapping system (St Jude medical). The recorded EnSite data was exported and post-processed using Matlab.

2.2. Definitions

Propagation patterns were categorized into 3 main morphologies based on previous studies [2]: reentries, focal impulses and disorganized activity. Reentry was defined as the existence of a “repetitive circus movement” that occurs at least once per second throughout the recording [2]. A focal impulse was defined as a site for

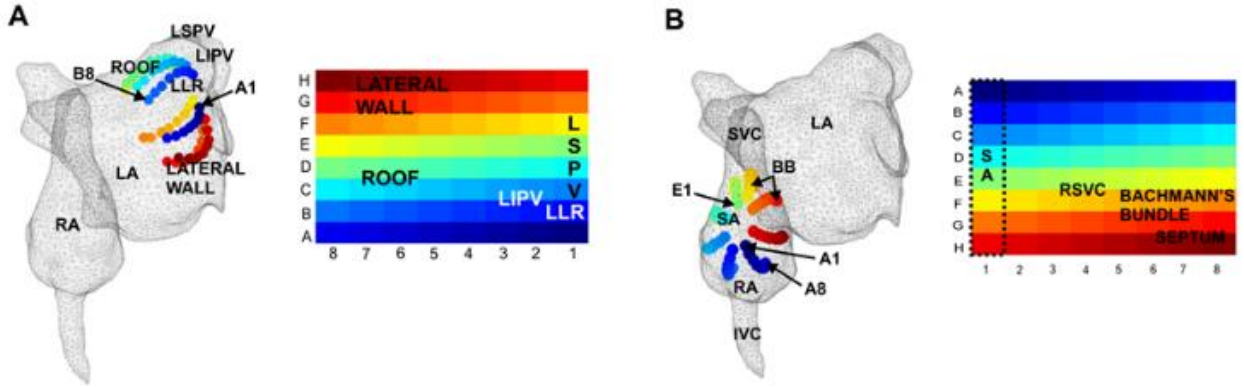


Figure 1. Representation of the 3D atrial geometry showing the basket inside the left **A**) and right **B**) atria. The color here is used to distinguish the 64 electrodes. R/L A: Right/Left Atrium, R/S/VC: Right Superior/Inferior Vena Cava, SA: Sino atrial node, BB: Bachmann's Bundle, L/S/PV: Left Superior/Inferior Pulmonary Vein, LLR: Left Lateral Ridge.

which the activation occurs earlier than all its neighbors and spreads in multiple directions [6]. Propagation patterns that did not fulfill any of these criteria were considered as disorganized activity.

2.3. Methods

A Savitzky-Golay filter [7] was applied to the atrial electrograms using a polynomial regression to remove high-frequency noise. A QRS subtraction method [8] was used to cancel far-field ventricular signals from the unipolar electrograms. The unipolar signals were then converted to bipolar to further remove far-field noise. All signals were individually examined where any faulty signals were identified and excluded from further analysis.

The local variability approach described by Ganesan et al. [9] was used to enhance the atrial activity for characterization of the propagation patterns. The local variability $u(t_k)$ was constructed by computing the local integral of a fixed size sliding window that slides over the recorded signal using the following formula:

$$u(t_k) = \sum_{m=k-\frac{T}{2\Delta t}}^{k+\frac{T}{2\Delta t}} \left| \frac{v(t_m) - v(t_{m-1})}{\Delta t} \right| \quad (1)$$

Here, T is the size of the sliding window and $v(t_k)$ is the bipolar signal. The value of $u(t_k)$ is small during periods of low electrical activity and increases when the sliding window begins to overlap with deflections in the bipolar signal thereby enhancing atrial activity. The dominant frequency was computed using a fast Fourier method. Recurring patterns of activation were then manually identified by using activation time maps, dominant frequency analysis and by screening through the entire isopotential movie.

3. Results

Reentry

Reentries were identified in the left atrium (LA) of Patient #1. Stable and repetitive reentries were detected throughout the entire length of the recording where a consistent pattern was observed across all cycles. Activation circulated around the two left PVs via the posterior LA, atrial roof, atrial ridge and left atrial lateral wall with an average cycle length (CL) of 200 ± 20 ms (Figure 2.A). Figure 3.A shows the propagation pattern of the reentries for five cycles (from 1030 to 2060ms). The average frequency of this atrial activity was 4.7Hz (Figure 3.B). The core of the reentries was situated in the left PVs.

Disorganized activity

In 3 out of the 5 patients studied, disorganized activity was observed in the right atrium (RA). The RA wave propagation in these patients was complex and fibrillatory. Figure 2.B shows the disorganized activity observed in the RA of Patient #3. The blank spaces represent unreliable signals that were excluded from analysis. Random, irregular wavelets were observed in this patient. This particular activation pattern shows two horizontal waves propagating through the Bachmann's bundle from opposite directions. They collided and were blocked for further propagation. It was not possible to determine the mean cycle length of the propagation pattern as the pattern was entirely anarchical. Similar patterns of chaos and disorganization were also detected in the RA of patients #1 and #4.

Focal impulses

Focal impulses were observed in the LA of 3 patients and in both atria of 1 patient. The propagation pattern

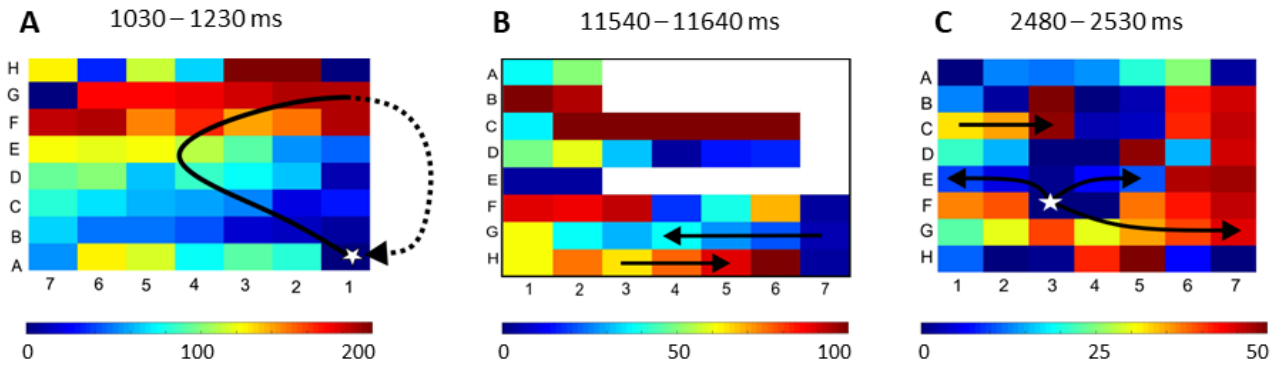


Figure 2. Different activation patterns from 3 patients with persistent atrial fibrillation (AF). A) Left atrial reentry with a mean cycle length (CL) of 200 ± 20 ms. B) Right atrial disorganized activity. C) Right atrial focal impulses with a mean CL of 150 ± 20 ms. White spark indicates ectopic foci.

presented in Figure 2.C shows a stable focal impulse located in the RA of patient #2 near the SVC and the septum. The earliest activation (indicated by the white spark on the activation time map) originated from the electrode F3 and spread radially but non-uniformly towards the rest of the atrium. The focal impulse was observed throughout the entire recording with an average frequency of 5Hz and an average cycle length of 75 ± 20 ms. A similar propagation pattern was observed in the LA of patients #2, 3, 4 and 5 near the right and left superior PVs.

4. Discussion

Observation of localized sources

Although the debate about the mechanisms underlying persistent AF is still ongoing, sustained localized sources in the form of reentries or focal impulses have been consistently observed during AF. This is in line with findings from several studies [3, 5, 6, 10, 11] which suggest that localized sources may play a predominant role in maintaining AF.

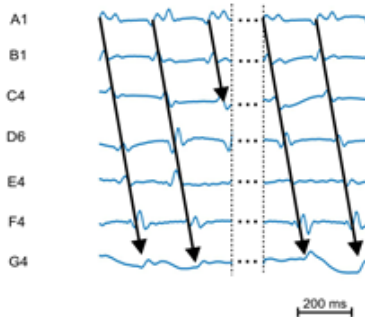
Disorganized activity in RA

Disorganized activity was observed in the RAs of patients #1, 3 and 4 (Figure 4). Although these observations can be explained by the multiwavelet hypothesis, suggesting that electrical activity is simply random and disorganized in the RAs of these patients [2], it cannot explain why stable localized sources were observed in the contralateral atrium of the same patients. The localized sources hypothesis, on the other hand, provides a more plausible explanation to the coexistence of organized and disorganized activities detected. This critical point of observation suggests that localized sources rather than multiwavelets are likely the principal mechanism sustaining AF in the patients studied.

Study limitations

This study was performed on a small group of patients (N=5) which is insufficient to represent the true population of patients with persistent AF. Further analysis into a larger database is currently underway. Poor coverage of the atrial surface has limited the understanding of how electrical activity is spread from the localized sources. Poor positioning of the basket catheter also introduced a lot of noise that was difficult to filter out and may lead to the existence of undetected sources. Nevertheless, despite these limitations, we were still able to identify clear patterns of localized activation in all the patients studied.

A Bipolar electrograms from 1030 to 2060 ms



B LA frequency bar chart

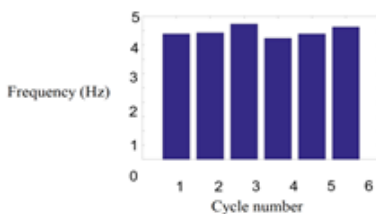


Figure 3. A) Reentries propagation pattern (black arrows) on bipolar signals. Dashed lines: QRS subtraction. B) LA frequency bar chart divided into 6 segments of 10 s.

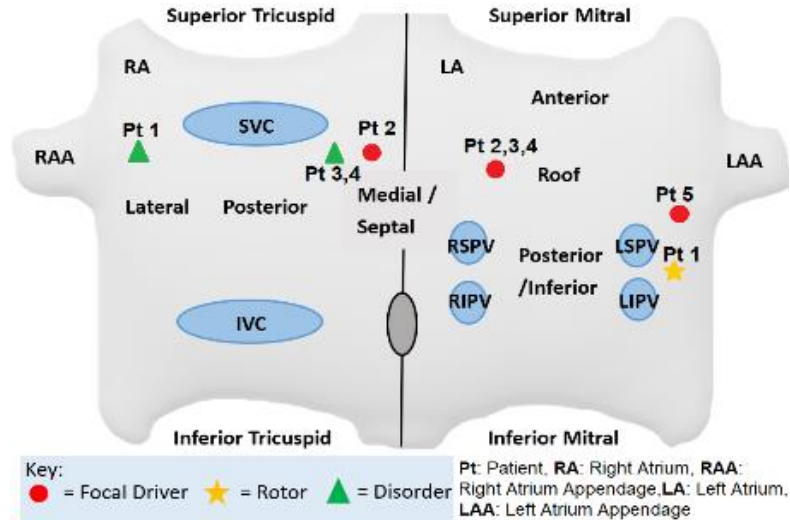


Figure 4. Scheme of the detected activation pattern in both atrial chambers for each patient with persistent atrial fibrillation (N=5). S/I VC: Superior/ Inferior Vena Cava, R/L S/I PV: Right/Left Superior/Inferior Pulmonary Vein

5. Conclusion

The mechanisms sustaining persistent AF are still unclear and the subject of intense debate. However, the results presented in this study support the idea that localized sources in the form of focal impulses or reentries are the predominant mechanisms driving AF. The majority of localized sources are situated near the PVs of LA where the left superior PV region in particular, seems to be the major site of origin of these localized sources.

Acknowledgements

This study was supported by the Health Research Council of New Zealand.

References

- [1] Haissaguerre M et al. Spontaneous Initiation of Atrial Fibrillation by Ectopic Beats Originating in the Pulmonary Veins. *New England Journal of Medicine* 1998; 339(10):659–666.
- [2] Lee G et al. Epicardial wave mapping in human long-lasting persistent atrial fibrillation: transient rotational circuits, complex wavefronts, and disorganized activity. *European Heart Journal* 2013; 35(2):86-97.
- [3] Hansen BH et al.. Fibrosis and atrial fibrillation: computerized and optical mapping; a view into the human atria at submillimeter resolution. *JACC Clinical Electrophysiology*, 3(6):531-46, 2017.
- [4] Kuklik P et al. Identification of Rotors during Human Atrial Fibrillation Using Contact Mapping and Phase

- Singularity Detection: Technical Considerations. *IEEE Transactions on Biomedical Engineering* 2016; 64(2):310-318.
- [5] Haissaguerre M et al. Driver domains in persistent atrial fibrillation. *Circulation* 2014; 130:530-538.
- [6] Hansen BJ et al. Atrial fibrillation driven by microanatomic intramural reentry revealed by simultaneous sub-epicardial and sub-endocardial optical mapping in explanted human hearts. *European Heart Journal* 36(35):2390-401, 2015
- [7] Savitzky A and Golay MJ. Smoothing and Differentiation of Data by Simplified Least Squares Procedures. *Analytical Chemistry* 1964; 36(8):1627-1639.
- [8] Zhao J et al.. Progressive modification of rotors in persistent atrial fibrillation by stepwise linear ablation. *Heart Rhythm Case Reports*,1:22-26, 2015.
- [9] Ganesan A et al. Bipolar Electrogram Shannon Entropy at Sites of Rotational Activation: Implications for Ablation of Atrial Fibrillation. *Circulation: Arrhythmia and Electrophysiology* 2012; 6(1):48-57.
- [10] Narayan SM et al. Treatment of Atrial Fibrillation By The Ablation Of Localized Sources: The Conventional Ablation for Atrial Fibrillation With or Without Focal Impulse and Rotor Modulation (CONFIRM) Trial. *JACC* 2012; 60(7):628–636.
- [11] Zhao J et al.. 3D integrated functional, structural, and computational mapping to define the structural “fingerprints” of heart-specific atrial fibrillation drivers in human heart ex-vivo. *Journal of the American Heart Association*. 6:e005922, 2017.

Address for correspondence.

Dr. Jichao Zhao
 Auckland Bioengineering Institute
 University of Auckland, New Zealand
 E-mail: j.zhao@auckland.ac.nz